



motivation clarity productivity energy wellbeing performance success

Menu of Services

1800 631 365 www.tpr.com.au



HEALTHY OFFICE SOLUTIONS

Improve your bottom line with TPR products & services

Our Brands



Who We Are

Founded over 35 years ago originally as Tropical Plant Rentals, an indoor plant hire company servicing the B2B sector, the company has evolved in recent times to the TPR GROUP. We focus on providing a complete product range of healthy office solutions, servicing over 1500 business clients Australia-wide through our national network.

What We Do

A work environment must allow your best people to thrive, fully utilising their strengths. A positive working environment enhances financial, social and strategic performance. The TPR GROUP provides a powerful suite of services to make your office environment a positive place to work. Rental hire starts from \$25.00 per week - now that's an affordable service that adds value to the wellbeing of your team.

Industry Memberships

Tropical Plant Rentals is a member of the Nursery and Garden Industry of New South Wales, the Nursery and Garden Industry of Australia, the National Interior Plantscape Association and the Green Building Council of Australia.

What is Office Wellbeing?

TPR's range of products improve employees' wellbeing, assist in providing the ambience to foster a positive and energized company culture, and build morale and loyalty within teams.

Astute employers understand that by making targeted investments in the environment their employees work within, companies can systematically improve the value of this asset and make it even more productive – producing a healthy return on their investments. The improved health of the workforce translates into better performance on the job, and is without doubt the most promising new source of competitive advantage in the global marketplace.

Why Wellbeing?

These are challenging times that require resilience and positivity.

If you want to experience plummeting morale, skyrocketing stress levels, and massive performance and productivity losses, then these are the key results of wellness budget cuts.

A work environment must allow your best people to thrive, fully utilising their strengths. A positive working environment enhances financial, social and strategic performance.

During any tough period, focusing ON increasing your return on investment is the best investment you can make.

Facts - What others say

Some may have the perception that investing in health and wellbeing has a relatively low yield. Statistics illustrate this is a myth. Recent case studies show on average, ROI (Return on Investment) for workplace wellness programs is \$3-\$5 for every \$1 invested.

Harvard Business Review.

"The healthiest Australian employees are almost three times more productive than their unhealthy colleagues."

Medibank Private (November 2005), article The Health of Australia's Workforce.

PricewaterhouseCoopers research on corporate wellness programs have shown a 3-to-1 return on investment. "There are quantifiable benefits from using wellness programs to attract and retain talented, healthy employees."

Simon Leary, partner, PricewaterhouseCoopers LLP, the UK firm of PwC and Health Research Institute Leader for United Kingdom/Europe.

"The economic case for prevention is overwhelming."

"We now have a science of happiness, which we know is not just... the pleasant life, but also involves living the engaged life, the meaningful life and this is being applied in workplaces."

Dr. Timothy Sharp CEO, The Happiness Institute

Workcover Authority of NSW recommends plants be used in the workplace to help alleviate characteristics of Sick Building Syndrome. You need only 1 plant for every 10 sq. metres!

wood



fire



water



earth





TPR Products & Services Motivate your Team

PricewaterhouseCoopers research on corporate wellness programs have shown a 3-to-1 return on investment.

Our Projects

Koala Corridor – Green Community Initiative

The TPR Group is the leading provider of office health wellbeing services and products. We add value to your workplace by creating happy and productive working environments. Established over 30 years ago, originally as a plant hire company, TPR considers itself to be at the cutting edge of new green initiatives.

Recently we established a Koala corridor near Gunnedah – with the ambitious goal of planting some 2000 special eucalypt trees for the native Koalas that inhabit this region. Some of these include Tallowwood, River Red Gum, Bimble Box and Grey Gum.

The company plans in the future to make this special project available to our clients, where they can take staff and enjoy a day of “putting back into the environment” and sharing in a very special habitat.

Franchisee collecting
Eucalypt seed



Planting a seedling



Woodlawn Resident Koala



Woodlawn
Koala Corridor

TPR GROUP National Service Centre

6 Pedvin Place, Annangrove NSW 2156

Phone 1800 631 365

Fax 1800 631 265

Email info@tpr.com.au

Website www.tpr.com.au

Call us to organise a free consultation



1800 631 365

www.tpr.com.au

Containers 4



Plants 8



Green Walls 10



Aarons Coffee 14



Designer Virtual Scapes 16



Perpex Art 18



Canvas Art 20



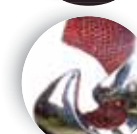
Botanical Art 22



Artvases 24



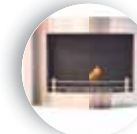
Sculptures 26



Aquariums 28



Eco-friendly Heaters 30



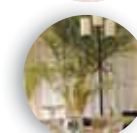
Water Features 31



Office Health 32



Short Term Hire 34
& Plant Pot Advertising



Containers



Choose a designer pot and bring elegance to the office environment

Key Benefits

- Your choice of designer pots
 - Pots can be colour matched to your specification
 - New Luna Pots add a touch of pizzazz to your green display
 - Choose from a wide selection of toppings including pebbles, coloured glass, coconut fibre and eco-friendly "rubber bark"
- Use plants in your office to promote clean air for your workers. TPR GROUP recommends 1 large plant per 10 - 12 square metres to reduce office hazardous toxins that are dangerous to your employees' health and wellbeing.
- Toxins are created by photocopiers, printers, furnishings, carpets and modern building materials. Most work environments and public buildings are sealed from the real world and are usually designed to prevent fresh air from outside coming in. There is a wide body of research from the United States and here in Australia which clearly shows the contribution indoor plants make to improving air quality.



ASCOT WHITE STONE
(Stainless Steel & Acrylic)



LUNA RANGE
(Fibreglass)



STEEL ELEGANCE RANGE
(Fibreglass)



THE HAMILTON
(Fibreglass)



STAINLESS STEEL RANGE



MINI GARDENS
(Fibreglass)



EXECUTIVE RANGE
(Fibreglass)

Containers



Indoor Plants aid Corporate Wellness

Key Benefits

- Window Boxes soften architectural lines without obstructing views
- Tall Troughs provide excellent space partitioning solutions
- Screen areas or divide spaces with Floor Troughs
- Enhance interiors at eye level with space saving Partition Troughs
- Choose compact Coat Covers for tight areas yet still enjoy varied planting options

Our extensive pot range provides a multitude of solutions to enhance interior environments naturally while addressing functional and aesthetic design requirements.

Should you require a container exacting in scale, proportion, shape and colour we can source it for you and even design and manufacture it for you.

Our stylish and contemporary containers can be colour matched to your specification, in accordance with Australian Colour Standards.



600mm w
COAT COVER
(Fibreglass)



850mm w
WINDOW BOX
(Fibreglass)



WEDGE MINI GARDEN
(Fibreglass)



Plants



Indoor Plants aid Corporate Wellness

Key Benefits

- Plants absorb indoor air pollution
- Artificial plants pollute the air
- Plants counteract drying of air conditioning by increasing humidity
- Oxygen is put back into stale air
- One plant per workstation removes 90% of volatile organic compounds
- Greening your indoors decreases nitrogen oxides by over 30%

Not only do plants clean the air but they lift the spirit and have psychological benefits

Indoor plants consume as little as 2.07 litres of water per fortnight compared to the 2 litres maximum each person uses to clean their teeth.

The questions which are often asked regarding indoor plants and air pollution are, 'How many plants are needed to clean the air and which varieties are best?' Good questions! The only reasonable answer is 'as many as practical, commensurate with design and as variety is the spice of life, use different varieties.'

Indoor plants not only clean the air but they lift the spirit and have psychological benefits. In green-built hospitals, patients heal faster, being discharged on average two and a half days earlier.

Framed plant photos and fake plastic and silk plants cannot replace live, healthy indoor plants. Living plants clean; artificial plants and flowers pollute.

Requires:

☐ High light levels
 ☒ Medium light levels
 ☐ Low light levels



☒ SONG OF INDIA



☐ CTENANTHE
GREY STAR



☐ GOLDEN CANE PALM



☐ ZANZIBAR GEM



☐ CROTON



☒ BAMBOO PALM



☒ SANSEVERIA



☐ DIEFFENBACHIA



☐ SPATHIPHYLLUM



Mini Gardens

We recommend every employee should have a **Mini Garden** on their desk or living plant within eye sight to alleviate work place stress. Living plants ground employees in nature.



● KENTIA PALM



● HAPPY PLANT



○ YUCCA



○ SIERRA LEONE



● PHILODENDRON
CORDATUM



● STRELITZIA



○ TOPIARY FICUS



○ FICUS BUSHY



○ DRACAENA
MARGINATA



● PHILODENDRON
PANDA



● BLACKBEAN



○ GRASS TREE



○ PHILODENDRON
CANNIFOLIA



● BRASSAIA



● GOLDEN POTHOS



● RHAPIS PALM



● DRACAENA
JANET CRAIG



● CACTUS



● CORDYLINE RUBRA



● DRACAENA
DEREMENSIS



○ SAGO PALM

Green Walls



**Install a Living Green Wall
and create the WOW factor!**

Key Benefits

- On trend exciting and dramatic plantscaping
- Great space saving green solution
- Stunning designs with living plants
- Connect with nature at work
- Improve indoor air quality by removing toxins
- Green Star credits
- Innovative branding opportunity

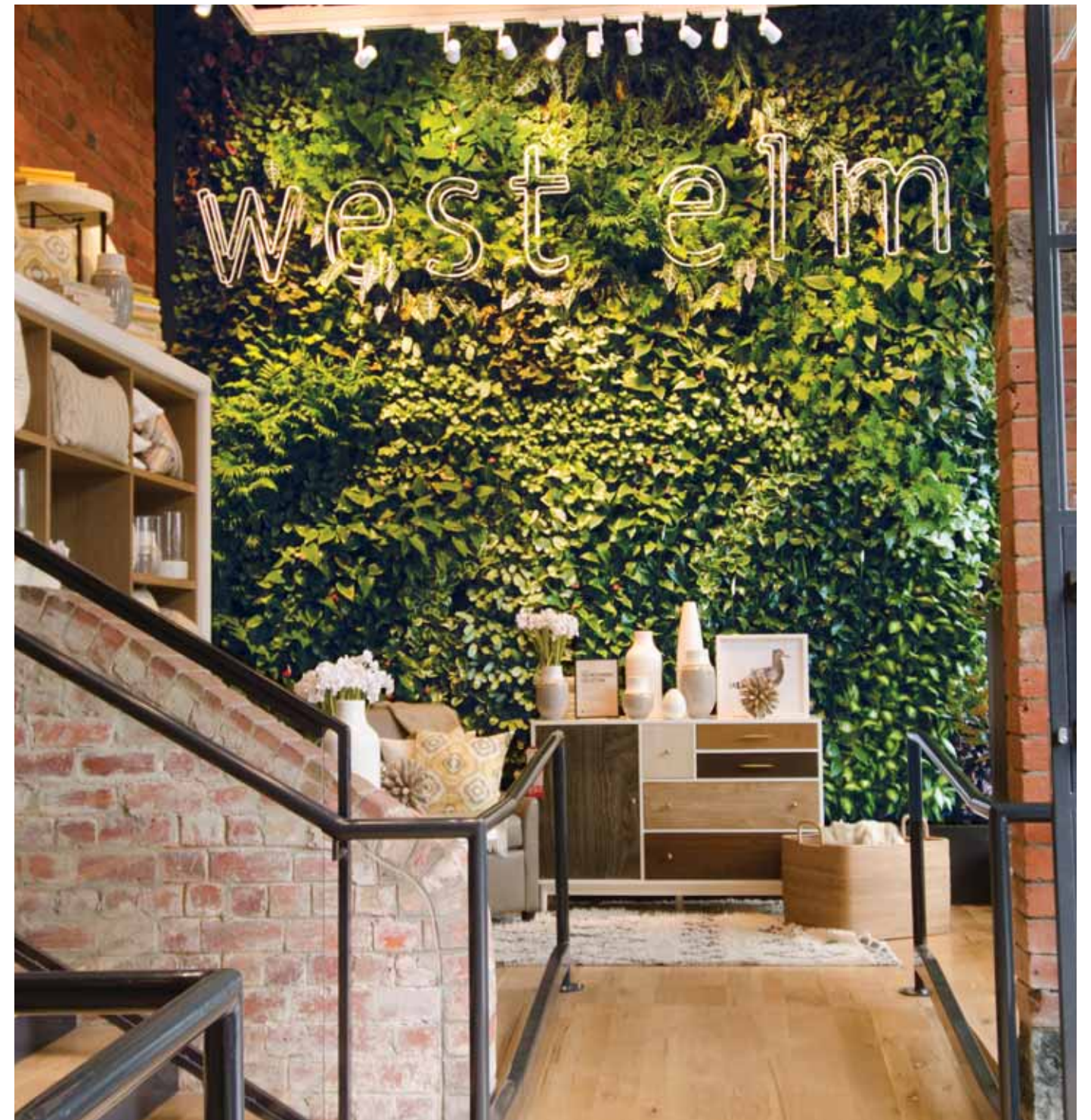
Living Green Walls not only look impressive but they also improve health and wellbeing

Living Green Walls are clever plantscaping systems that facilitate a high proportion of plants per square metreage, enabling exciting design opportunities with fantastic clean air benefits. They're perfect solutions for foyers, reception areas, courtyards – wherever you need to create impact and enhance a space.

With three types of wall systems from which to choose; Versa Wall™, Smart Wall™, and External Wall, you'll find a wall application specifically suited to your project

Our all-inclusive package provides our clients with peace of mind throughout each stage of the process including planning and design, installation and ongoing maintenance. Our processes, partnerships with certified contractors, and warranty on hard goods, irrigation and plants maintain the integrity of the Green Wall vision in the final product.

Interested in finding out more? Let our professional staff advise you further.



Construction of West Elm Melbourne Green Wall



Moisture proofing the wall
Self-adhesive water proofing is attached the wall to prevent moisture from penetrating the building



Framework constructed
The structure to support the plants is erected by a team of skilled professionals using specialised equipment



Irrigation and Drainage Systems installed
The compact systems are concealed behind a front panel and are programmed to automate watering and fertilisation of the vertical garden

Smart Wall

Dimensions: 127w x 407d x 2000h mm

Smart Wall is perfect for indoor environments such as lobbies, hallways, and other places of high traffic.

Built for quick and simple installation, the Portable Smart Wall system is naturally beautiful, eco-friendly, durable and economical.

Smart Wall features Includes:

Fully integrated design – allows for placement anywhere, no need for a water connection.

Irrigation tank and pump – water tank, pump and timer are integrated into the base of the system, can be filled by hand.

Non spilling – no water falls forward of the system, so no need to worry about mopping up a wet floor!

Design ability – a wide variety of plants can be used in the wall (depending on light) enabling exciting design opportunities. You can position several Smart Walls in a row to create a larger Green Wall!

Colours in several different colors to choose from.



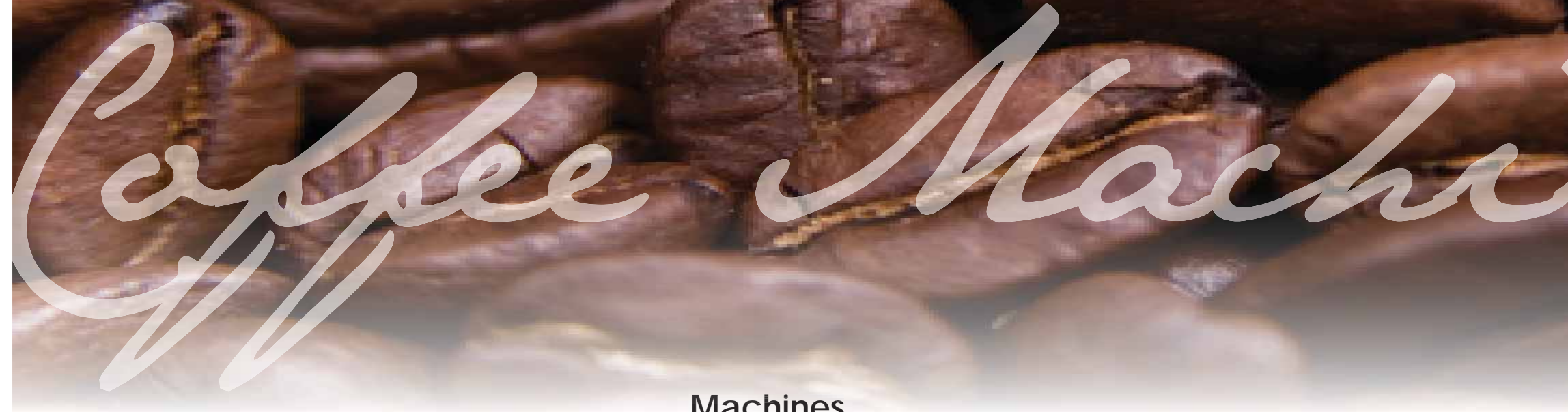
Ongoing Wall Maintenance

Our professional plant technicians maintain your green wall on a weekly basis which includes: quality control, spent foliage removal, insect and disease control, and pruning to maintain plantscape design.



Other Green Wall Examples

Aarons Coffee



Machines



Hire a coffee machine and keep your team happy and productive

Key Benefits

- Hire a fully maintained coffee machine - hassle free
- Enjoy espresso coffee at quarter of the cost of buying from the cafe
- Quality Arabica beans delivered to your door
- Keep your team happy and productive on the job

Enjoy the aroma and taste of freshly brewed coffee with Aarons Coffee at Work. Our services are: Hire and Maintenance; Coffee Bean Supply; Machine Sales and Maintenance.

It's impressive, convenient and cost effective. For a fraction of the cost, you and your staff can enjoy an aromatic espresso coffee in less than a minute.

Why do we use Arabica beans?

Because they make the best coffee - low in caffeine and acidity but high in flavour with a distinctive aroma.

Espresso Coffee facilities in the office shows appreciation to your staff and saves their time, encourages social bonding within the company, and definitely impresses your clients with a professional offering.

Depending on your coffee usage and the machine supplied, the cost per cup of coffee will vary from \$0.70c to as little as \$0.40c a cup.

Let our professional staff advise you of the features of each machine and supply you with a technical sheet detailing the prices and cost per cup for various coffee usage.



Saeco Phedra

Dimensions: 450w x 410d x 710h mm

(Suitable for 50 + staff, more than 200 cups per week)

- Vending machine
- Fresh milk based drinks
- Can be fully plumbed for water supply and drip tray drainage.
- Bean to cup coffee
- 3 extra cannisters for more beverage options e.g. hot chocolate, chai tea and soup
- Fully programmable one touch buttons for up to 14 hot beverage selections
- Mini fridge can be included for direct supply of chilled milk

Gemini Blitz 520 Pro Pod

Dimensions: 450w x 410d x 390h mm

(Suitable for 20 + staff / more than 200 cups per week)

- Automatic coffee machine
- Uses special Aarons pods of roasted ground beans, delivering superior espresso coffee
- Automatic milk frothing
- Produces fresh milk based espresso coffee
- Two independent delivery units
- Built in steam pipe
- Can be plumbed for water supply and drip tray drainage
- Contemporary design
- Mini-fridge can be included for direct supply of chilled milk to auto frother





Saeco Royal Cappuccino

Dimensions: 390w x 460d x 400h mm

(suitable for 10-80 staff, 30-200 cups per week)

- Portable
- Automatic milk frothing (using steamer arm)
- Models with dual boilers and pumps are available (allowing for two functions at one time)
- Brew one coffee while frothing milk for another
- Mini-fridge can be included for direct supply of chilled milk to auto frother



Saeco Idea Cappuccino

Dimensions: 500w x 580d x 680h mm

(suitable for 80+ staff, more than 200 cups per week)

- Can be fully plumbed for water supply and drip tray drainage.
- Automatic milk frothing using steamer arm
- Models with dual boilers and pumps are available (allowing for two functions at one time)
- Fully programmable one touch buttons for a full range of coffees
- Mini-fridge can be included for direct supply of chilled milk to auto frother
- Cup warmer available an optional extra



Blitz 510 Pod

Dimensions: 320w x 410d x 400h mm

(Suitable for 20+ staff / 200+ cups per week)

- Uses special Aarons pods of roasted ground coffee which deliver excellent espresso coffee
- Fresh milk based espresso coffee
- One independent delivery units
- Automatic milk frother
- Built-in swivelling steam pipe
- Hot water delivery pipe
- Can be fully plumbed for water supply
- Compact size
- Contemporary design



Jura XS9 Classic

Dimensions: 410w x 390d x 470h

(Suitable for 10-80 staff, 30-200 cups per week)

- Portable
- Can be fully plumbed
- One or two cups of coffee in one brewing operation
- Separate hot water and steam outlet
- Micro-foam milk frothing spout
- 12 different coffee styles at the touch of a button
- Programmable coffee strength
- Programmable brewing temperature
- Programmable switch off time
- Active bean monitoring
- Energy Save mode reducing power usage by up to 40%

Aarons Coffee



Hire a coffee machine and keep your team happy and productive

Key Benefits

- Aarons blends use only quality graded AA Arabica beans
- Aarons Blends feature two roast profiles to deliver consistency in quality
- Aarons Blends are small batch roasted for taste consistency (just 30 kilos per roast)
- Aarons blends are demand roasted to deliver the freshest coffee

Coffee Beans or Coffee Pods?

The choice is yours!
Our range of quality espresso coffee machines gives you the freedom to choose either 'bean to cup' or 'pod' coffee delivery.

With both machine ranges delivering seriously good espresso coffee quickly, efficiently and at the touch of a button, how you decide to make your coffee is simply down to the method you prefer.

Aarons coffee blends cater to different taste preferences – from the rich flavoured Continental blend that will suit the coffee connoisseur, the smooth creamy Platinum blend that will impress any coffee lover, to the popular aromatic Gold blend that will suit a range of coffee styles. And for those clients preferring a caffeine free option, we also provide a 100% chemical free decaffeinated blend.

Our qualified and knowledgeable staff will help you select the blend that best suits your office environment.

Coffee



GOLD BLEND

This specialty blend is a premium 5 bean mix consisting of Colombian Supremo, Indonesian Mandheling, Papua New Guinea Kimel, Java Kayumas and Tanzanian AA.

- Available in beans and pods
- The blend combines two distinct roast profiles to deliver a beautiful rich full bodied cup that tastes sensational.
- A medium to dark roast and extremely aromatic with delicate fruited flavours this coffee is perfect for all coffee styles.



DECAFFEINATED BLEND

This blend is a premium 3 bean espresso mix of Columbian origin which delivers a full bodied coffee taste without the caffeine component.

- Available in pods
- The Swiss Water process used to process this blend is 100% chemical free



CONTINENTAL BLEND

This blend is a quality 5 bean mix consisting of Colombian, Indonesian, Guatemalan, Brazilian and PNG. The beans are Colombian Supremo, Brazil Cerrado, Indonesian Mandheling, Guatemala Antiqua and PNG Kimel.

- Available in beans and pods
- The blend is a slightly darker, medium coarsed coffee that is well balanced with an excellent caramel-like sweetness and overall richness.
- A distinctive rich flavoured coffee that suits the coffee connoisseur.



SYRUPS

Why not try a coffee enhancing syrups as something special for your team or clients. Your coffee, and more importantly your company, will get noticed. Choose from, French Vanilla, Hazelnut, Irish Cream or Caramel.



FRIDGE

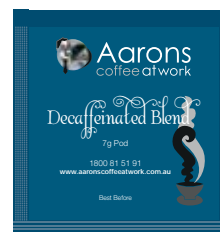
- Suitable for all coffee machine installations
- Fridge cooled with a compressor unit which guarantees a minimum temperature
- Fridge enables direct supply of chilled milk
- Designed with the coffee industry in mind



PLATINUM BLEND

A beautiful high end coffee that combines a secret blend of seven different Arabica beans with two unique roast profiles from around the globe.

- Available in pods
- Stretching from the mountains of Brazil to southern Ethiopia this blend is a wonderful medium soft bodied coffee with a residual sweetness.
- Enjoy a truly smooth creamy coffee that is sure to impress any coffee lover.



COFFEE PODS

- Our espresso pod machines are reliable, efficient and easy to use.
- Pods provide the freshest possible coffee every time.
- Pods mean less cleaning and less wastage.
- Quality graded AA Arabica beans are used in our pods.



JURA 'COOL CONTROL'

- Able to cool milk to 25 degrees below the ambient temperature
- The cooler keeps the milk at an optimum temperature range preventing accidental freezing
- The canister is manufactured in quality stainless steel which can be easily removed, refilled, and cleaned.

Designer Virtual Scapes



Experience nature at work as never before with VirtualScapes and be part of the inspirational environment that unfolds

Key Benefits

- Superb 'moving nature artworks' presented on Full HD medium with astonishing colour, clarity and depth
- Virtual Scapes provide a practically hyper-real viewing experience on screens (almost 3D, without the glasses)
- 'Moving nature artworks' are created by a group of exceptionally passionate and talented cameramen, filmmakers and photographers, producing work for the BBC, National Geographic and the Discovery Channel
- The contemporary alternative to traditional artworks in oil, watercolour and acrylic
- Wall and ceiling installations provide innovative solutions to open up any space and have the view you want

At TPR GROUP we believe it's inherently human to want to connect with nature and vital for our wellbeing – despite the fact that most people in our modern world spend almost all of their time indoors. We are passionate about bringing nature into the workplace in a personal way, to facilitate a healthier, happier and more productive environment – a place where people and business thrive.

Our division Virtual Scapes, provides that connection with our natural world in a gentle and unobtrusive way, where people can enjoy birdsongs, delight in beautiful flowers, observe marvellous innocent creatures, listen to the sounds of rain, feel revitalised near waterfalls and reflect under an open sky.

Our media collections, crafted and compiled by professionals over 30 years, provide hours of unique peaceful observations of sub-tropical rainforests, beaches, mountains, streams, ice forms, desserts, marine environments and sky scapes - ambience visuals in glorious Full HD with clear sounds of nature.

VirtualScapes are available in a range of Full HD screen installations to suit your requirements including Virtual Window, Virtual Sky, Virtual Ocean Aquarium and Virtual Marine Art.



Site Visit - A qualified professional will visit you on site and make recommendations to suit your requirements.



Bracket Installation

An installer will fix wall brackets to hang your Virtual Scape.



Screen Installation

Full HD flat screens are fixed are mounted to wall brackets



Frame Installation

A custom built picture frame is fixed to the mounted screens to complete your Virtual Scape

scapes



Virtual Window

Open up any closed in space, bring the outdoors in and enjoy the inspirational view of the natural world with Virtual Windows.

Virtual Ocean Aquarium

Experience the wonder and beauty of the marine world and enjoy the tranquillity that unfolds, without the maintenance, with Virtual Ocean Aquariums.

Virtual Sky Window

Diffuse stressful situations with a peaceful view of the heavens and foster a calm soothing ambience with Sky Windows.

Virtual Marine Art

Enhance your work environment with moving nature artworks in enhanced brilliant technicolour for a designer, edgy, and unique ambience.

Virtual Scape Standard Sizes (mm)

Single Screen Installation

Small	32"	735 x 434
Large	46"	1057 x 615

Multiple Screen Installation (4 Screens)

Small	1470 x 868
Large	2114 x 1230

Other sizes are also available.



Other Virtual Examples

We have literally thousands of hours' footage of moving nature artworks available for your enjoyment. Our passionate team of film makers are also available to shoot custom footage, should you require

Perspex Art



Stunning contemporary Australian artworks grounded in nature

Key Benefits

- Produced bespoke in the size, shape and colourway to suit your offices
- Exclusive yet affordable and effective way to update your workplace environment
- Polished, modern perspex medium enhances and communicates your brand values
- Perfect for reception areas and boardrooms
- Inspire creativity, improve wellbeing and improve productivity

Research shows that incorporating art into the workplace not only inspires creativity and improves individual and collective wellbeing, but can significantly increase productivity - especially when employees are involved in the selection process.

These stunning, perspex artworks use their transparency to produce additional visual interest by casting shadows on to the walls that change with the intensity and direction of the light during the day.

They are Australian designed and produced to order, supporting local design and manufacturing, keeping their carbon footprint low.

The designs in our selection take their inspiration from nature and will create a more welcoming and inspiring workplace for your employees and visitors alike.

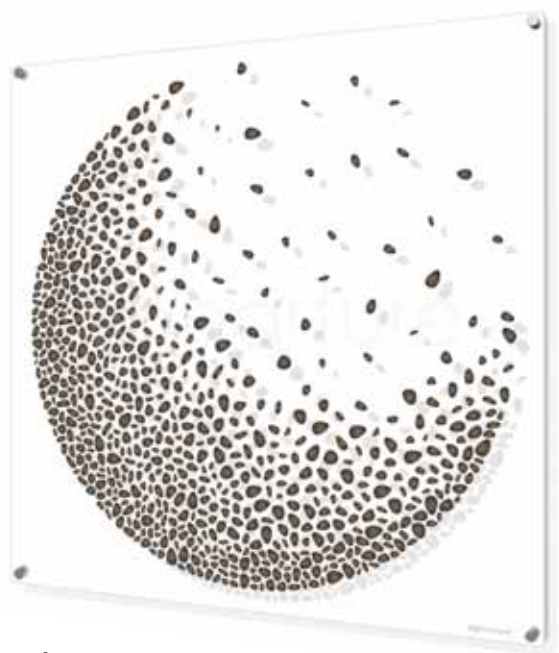
The perfect choice for the reception areas, foyers and boardrooms, perspex art is guaranteed to create an impact in any space.



Perspex Art Standard Sizes (mm)

Square	Rectangular	Panoramic	Triptych
600 x 600	600 x 900	600 x 1800	3 x 600 x 600
800 x 800	800 x 1200	800 x 2400	3 x 800 x 800
1000 x 1000	1000 x 1500		3 x 1000 x 1000
1200 x 1200	1200 x 1800		3 x 1200 x 1200

Custom sizes are also available



Annapurna

These Perspex Artworks, from the Balance collection, complement the trend for natural materials and interiors of luxurious simplicity. Based on organic forms, reminiscent of river worn pebbles, the artworks respond to our desire to create an ambience of meditative tranquility in an increasingly chaotic world.



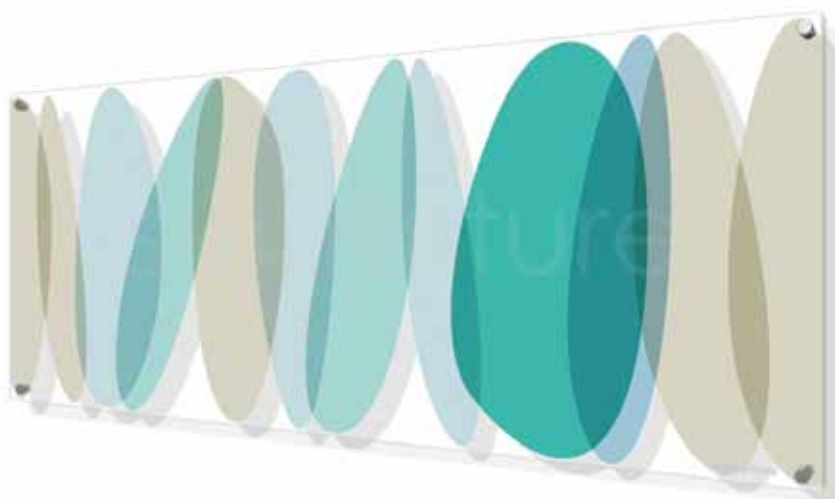
Burrawang

These Perspex Artworks, from the Treescape collection, complement the trend for raw timber finishes and organic textures, helping to create interiors that connect our increasingly urbanised lives to the natural environment. On trend dip dye and ombre effects are used to incorporate a vibrant colour palette whilst remaining grounded in natural inspiration.



Lizard Island

These Perspex Artworks, from the Outside In collection, complement the trend to relate interior design to the external environment and for these spaces to flow and connect us to nature. Nature provides the graphic inspiration, and these leafy designs variously evoke sun-dappled, autumnal or tropical days in an easy to love, naturally inspired palette.



Lhotse



Braidwood



Bellingen

Canvas Art



Travel the world from your desk with
TPR GROUP's Canvas Art

Key Benefits

- Stunning Canvas Art collections depicting the beauty of our natural and manmade world including 'Marine', 'Native', 'Outback', 'Antarctica', 'Horticultural', 'Architectural', 'Landscape' and more
- Superb original images of global and Australian environments taken by TPR GROUP — many locations few people have had the access to view
- Artworks made to order and produced in Australia on quality canvas medium, supporting local enterprise
- Images in nature's colour palette to suit a range of workplace environments.
- Connect with the outdoors from your workplace and feel inspired and motivated.

TPR GROUP has travelled extensively to bring you contemporary Canvas Art collections from around the globe.

Our field trips have captured images of our incredible world, including observations and reflections of a remote ice continent, desert landscape, native art and architectural human endeavour – images that are presented on quality canvas medium and accessible to all.

Connect with nature at work with one of Canvas Art works to help inspire, motivate and rejuvenate your team – just perfect for reception, boardroom and communal areas.

Available in standard rectangular format (900mm wide x 600mm high). Custom sizes are available on request.



Canvas Art Standard Sizes (mm)

Rectangular Format	Medium
900 w x 600 h	Stretched Canvas

Custom sizes are also available



Native Canvas Art

We have travelled extensively throughout the Western Australian Kimberly region to bring you a superb selection of native rock painting images that very few people have been able to access to view.



Antarctica Canvas Art

Our selection of images taken of the most remote continent on earth show stunning scenes of a super cold environment – sights few people have had the opportunity to witness first hand.



Architectural Canvas Art

We have travelled the globe to bring you this eclectic range of images depicting the beauty and brilliance of our man made world from a Peruvian dry stone wall to a stunning Japanese archway in vibrant orange.



Horticultural Canvas Art

Our Horticulture collection shows a diverse range of colourful and dynamic flora at its peak, from native Pitcher plants to intricate Climbing Peas to brilliant intricate Waratahs, ancient Banksias and Grass Trees.



Landscape Canvas Art

Images taken on global field trips show a kaleidoscope of beautiful landscapes, ranging from nature's barren deserts and tranquil lakes to structured man made gardens, formal in design, perfect in symmetry.



Marine Canvas Art

Stunning images from the tropical clear warm waters off New Guinea show an unbelievably diverse range of fish and coral life. Gigantic sprays of gorgonian corals and super sized sponges are truly breathtaking.



Outback Canvas Art

From stark open deserts to special spiritual places, Australia's soul is evident in these majestic images - nature's rich palette of ochre and sienna colours, dramatic and inspiring, with a sense of timelessness.



Wildlife Canvas Art

Images collected on field trips throughout Australia show diverse fauna in their natural habitat, from a colourful water dragon, lazy pelicans to dancing brolgas – enjoy the beautiful Australian environment at work.

Botanical Art



Enjoy the essence of the plant with TPR GROUP's Botanical Art

Key Benefits

- Beautiful original watercolour artworks, "one-off" pieces that won't be seen elsewhere
- Paintings produced by local Australian artists, supporting local talent and local enterprise
- Paintings of Australian flora and exotic plants, Connecting people indoors with nature
- Commissioned artworks available, meeting exact requirements

In honour of capturing and appreciating the essence of the plant, TPR GROUP is delighted to present Botanical Art – an ever-changing collection of beautifully executed paintings depicting Australian natives and exotic flowers, plants, fruits and vegetables.

With origins dating back to the 17th century, when botanical illustration was vital for documenting plant species before the advancement of photography, our original contemporary artworks range from exacting scientific reproductions of specimen plants detailing plant anatomy to beautiful delicate artworks of several plant species.

Painted by Australian Artists in translucent watercolour medium, the artworks truly compliment the beauty of the plant specimens, detailing the line, form, colour, texture and details of the plant species.

Professionally mounted in double mat black or white frames, our Botanical Artworks are available in standard size (83cm wide x 104cm high). Commissioned artworks and custom sizes are available on request.



Botanical Art Standard Sizes (mm)

Rectangular Format	Frame Colour
830 w x 1040 h	Black or White

Custom sizes are also available

Local Art



1.



2.



3.



4.



5.



6.



7.



8.

Artvases



Prolonged visual contact with nature has been proven to have positive psychological benefits.

Key Benefits

- Stunning "Living Art"
- A cost efficient way to brighten any reception area
- Living plants clean the air
- Show you care about the environment

Exclusive to TPR – Artvase

Display living greenery with living art, where plants and sculpture converge to offer a unique display of greenery and colour.

Artvase is a new design concept created exclusively by TPR. No longer do you need to have boring reception floral arrangements or worse still, artificial flower displays that pollute the air. Now you can have a permanent elegant piece of sculpture with your choice of colourful living plant and colour.

Ideal for reception areas, boardrooms or architectural displays. Suitable for product launches, weddings, events and more.

Choose colourful living plants for your reception and boardroom





486w
AV1

800h



278w
AV3

745h



300w
AV4

1080h



278w
AV5

745h



710w
AV6

530h



624w
AV7

784h



500w
AV8

900h



430w
AV9

815h



490w
AV10

730h

Sculptures



Sculptures for Wellbeing- the next frontier has arrived!

Key Benefits

- Inspirational sculptures inspire and motivate
- Hire from TPR's Four Seasons range
- TPR will change your sculpture 4 times a year – you choose a sculpture suitable for the season and your office ambience

Resilience is the ultimate competitive advantage in the age of turbulence – when organisations are being challenged to change more profoundly, and more rapidly, than ever before.

Resilience and its related concepts of corporate wellness, stress mastery, emotional intelligence, optimism and resonant leadership are in demand as modern businesses wrestle with economic turbulence, extreme competition, talent wars and the exit of baby boomers. Both the pressured demands of business and increasing expectations of employees and leaders leave us in no doubt that the demand for resilience will continue to boom.

Using inspirational sculptures, The Four Seasons range addresses the importance of resilience in the workplace - in a free form design expression, they re-energise, renew, and reinvigorate your workplace with visually aesthetic, contemporary pieces of art. They inspire and nourish the soul.

This is an important asset for the corporate workplace - particularly when we expect employees to be physically well, calm and focused, emotionally resonant, optimistic, and tenacious at work. Further, we expect employees to maintain this symphony of human performance for long periods, with limited recovery.

Simply select a sculpture for hire and exchange it quarterly, in line with nature's seasons. Should you become attached to your sculpture and wish to hire it on a permanent basis, you can, the choice is yours!





DESTINY



INVIGORATE



TRANSITION



SERENDIPITY



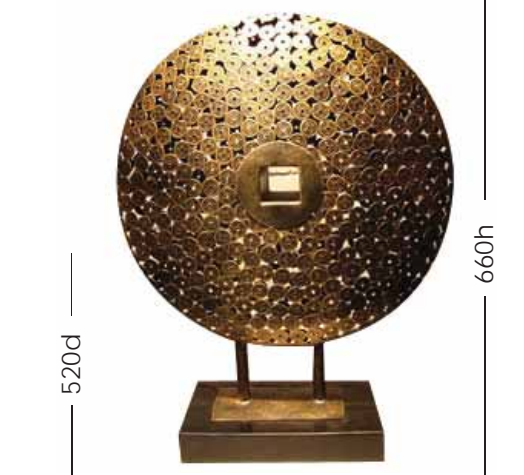
EQUILIBRIUM



KARMA



EVOLUTION



KISMET



ECLIPSE



VICTORY



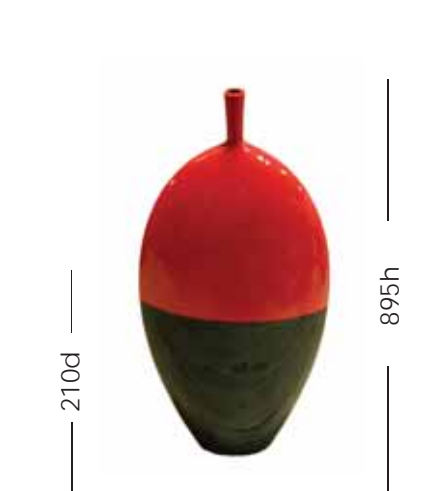
PROVIDENCE



YIELD



VERVE



VITAL



SPIRIT - individual pieces

Aquariums



Turn your office into paradise with our Aquariums for Wellbeing

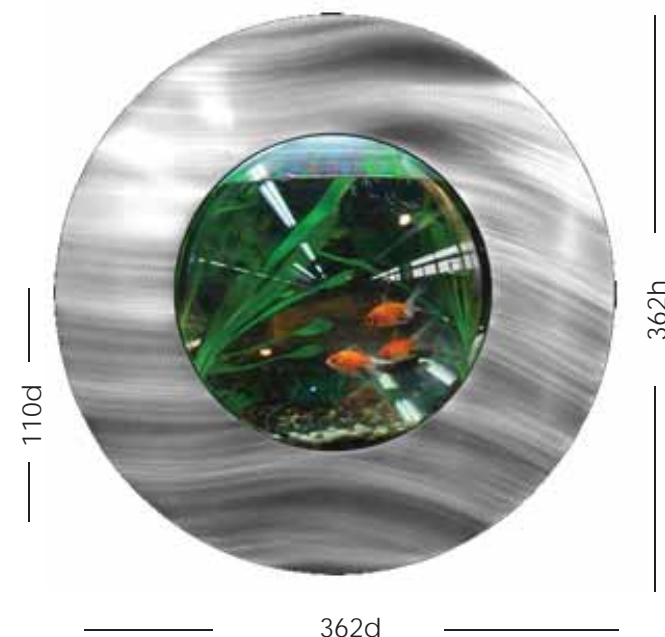
Key Benefits

- Perfect for waiting rooms and customer areas
- Wall mounted options - space saving
- Add tranquility to busy offices
- Helps to contain stress levels
- Inspirational to watch
- Can be customised with your logo background

Today's business environment is recognizing the growing need for wellness programs and ambience as a key to work/life balance, particularly in this difficult economic climate. Evidence shows that longer working hours, combined with poor eating habits and lack of exercise, can lead to 'dis-ease' or 'non-ease'.

Australians are working an increasing number of hours just to maintain a 'normal' lifestyle. The resulting stress comes at a great cost, affecting both physical and psychological health, social and family life and our essential need for personal happiness. A lifestyle of increased stress consequently compounds to create an overall decline in personal wellbeing and wellness, presenting a health and lifestyle challenge that inevitably flows into the workplace.

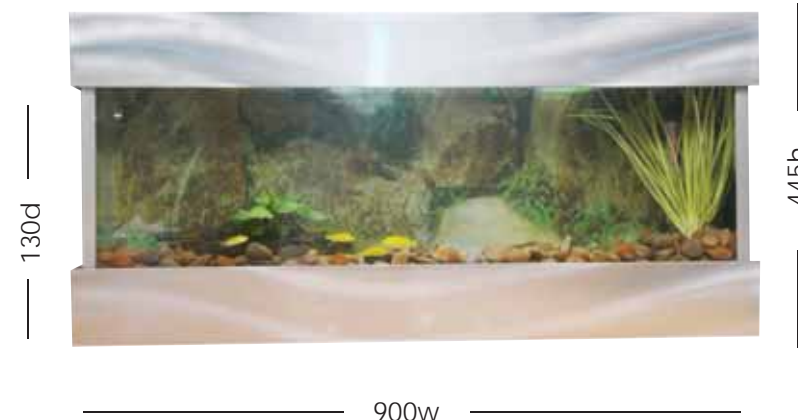
TPR's Aquaria for Wellbeing are constantly changing 'living pictures of colour', adding inspirational and restorative ambience to busy offices, literally bringing nature right into to the work environment! According to the ancient science of Feng Shui, used by thousands of business people around the globe, aquariums help create balance between our lives and the environment, helping to restore harmony with our natural world. Fish keeping is beneficial in reducing stress and anxiety and will re-energise your work environment with constantly changing 'living artworks'. When the pressure is on your employees to perform in difficult times, ensure you keep corporate burn out to a minimum. Your employees are, after all, your most important asset!



AQUA DISC
Stainless Steel (Wall Mounted)



AQUA VERTICAL
Stainless Steel (Wall Mounted)



AQUA GLASS SIDES
Stainless Steel (Desktop or Wall Mounted)



Side profile for wall mounted aquariums

110d



650h

1200w

AQUA DEEP HORIZONTAL
Stainless Steel (Wall Mounted)



445h

1200w

AQUA HORIZONTAL
Stainless Steel (Wall Mounted)



445h

1800w

AQUA HORIZONTAL
Stainless Steel (Wall Mounted)



865h

1800w

AQUA DEEP HORIZONTAL
Stainless Steel (Wall Mounted)



445h

2000w

AQUA HORIZONTAL
Stainless Steel (Wall Mounted)

Water Features



Energise your office environment with water features

Key Benefits

- Water is a powerful Feng Shui tool to attract abundance into your office
- The tranquil sound of water is both soothing and relaxing
- Water features provide acoustic balance

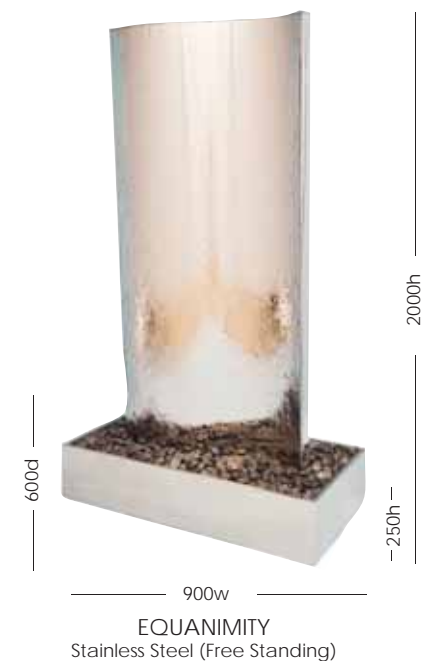
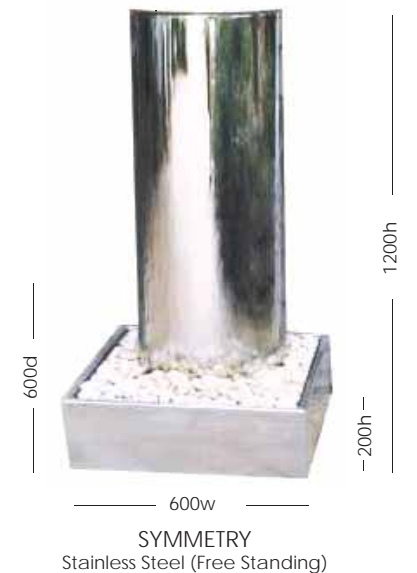
Tranquil sounds of water and Feng Shui benefits make water features an exciting new addition to our range of products. They create a dynamic, eye catching, comforting, soothing and relaxing atmosphere with the sights and sounds of flowing water.

The TPR GROUP offers a stunning range of water features that will enhance your office's wellbeing. Add a positive tone to your foyer, staff meeting rooms and more. Prices range from \$10 - \$200 per week for hire. Contact us now to have a specialist visit your office to discuss our exciting range of water features.

Our range provides free standing and wall mounted alternatives with all water features being self contained and leak-proof. With options in size, colour, finish, lighting, flow, volume control and rock tray/shelf, a water feature can be designed to suit your workplace environment. Logos or sign writing can be added to enhance your corporate image.

Hire your very own environmentally friendly water feature for your foyer or office now and receive a complimentary aromatherapy gift with each water feature hired.

Complimentary aromatherapy for your office



Eco-friendly Heaters



Add warmth and connection to your office environment with Eco-friendly Heaters

Key Benefits

- Add ambience to your office
- Use environmentally friendly heating
- Great for displays and trade show stands
- Casual or permanent hire

Eco-friendly Heaters are ideal for adding warmth and ambience to your office or meeting rooms. With more and more pressure on your team to perform, create a cosy warm ambience during those cold winter days with this environmentally friendly alternative to central heating.

Eco-friendly heaters are great for reception areas, boardrooms, event theming for product launches and more. Enquire now and get a quote to hire your heater.



780w
ECO BLAZE 7
Stainless Steel (Free Standing)



600w
ECO BLAZE 4
Black Steel (Wall mounted)



780w
ECO BLAZE 6
Stainless Steel (Wall mounted or Free Standing)



300w
ECO BLAZE 8
Stainless Steel (Free Standing)



800w
ECO BLAZE 1
Black Steel (Free Standing)



555w
ECO BLAZE 14
Stainless Steel (Wall Mounted or Flush Inserted)

Office Health



Can you afford NOT to have a healthy office?

Microbe Shield Treatment

Microbe Shield Treatment is a revolutionary new technology that uses a totally different approach in dealing with microbes, or bugs as we commonly call them. While other antimicrobials rely on poisons, toxic chemicals or heavy metal ions, Microbe Shield Treatment utilizes a patented molecular technology made primarily from silicon (that's sand in lay terms) that destroys microbes.

Touch points

The average person touches 132 different items per day starting with the alarm clock to switching off the light at night. These touch points are the surfaces that transfer the vast majority of viral, bacterial and fungal microorganisms that cause illness and contamination. This can expose any organization to financial or legal risk. Currently, antibacterial agents are quickly exhausted and once an area has been re-contacted it is immediately reinfected creating self sufficient bio-film breeding grounds. Secondly, the hardier microbes survive through resistant mutation and produce superbugs such as MRSA or Methicillin-Resistant Staphylococcus Aureus that killed 700 people last year in Australia.

The bugs you can't see

By definition, in their smallest form they are microscopic or too small to see with the naked eye. By the time they are large enough to see, you aren't looking at one microorganism, you are looking at hundreds or millions. At that point the question isn't whether or not you have microbial contamination. You do! The appropriate questions are:



Free touch point testing
Contact us on 1800 631 365

We can test your office touch points to determine how safe your workplace is. Using the ATP Luminometer the results are available within a minute.



Safe Level Guidelines

0-30	Food contact safe
30-100	Considered clean
100-200	Caution
200 plus	Unclean



Suitable for: Offices Hotels Hospitals Health Services Clubs Convention Centres Schools

How bad and how dangerous are the organisms?

In indoor environments, microbes are found on all surfaces, in the air and in water associated with both normal and catastrophic situations. They may be growing there (called amplification) or may simply have been deposited there from elsewhere. The few highly publicised outbreaks of Legionnaires Disease and the more complex indoor issues of today such as Sick Building Syndrome (SBS) and Building Related Illness (BRI) have begun to put microbiologists and microbiological sciences in the headlines and on the line.

So how do I get rid of these invisible bugs?

Microbe Shield Treatment is a broad spectrum antimicrobial that works effectively against the full array of microbes in buildings. Its features can be summarised as follows:

- Odourless and colourless
- Does not gas off
- Does not promote genetic adaptation or encourage natural selection
- Does not create super resistant bugs
- Effective against all fungal, bacterial and viral microbes found in buildings
- Permanently bonds to target surfaces
- Non-leaching and no zone of inhibition
- Can be applied to almost all interior surfaces. In fact it is made from silicon, that's sand, so it does not contain toxic chemicals. It is sprayed, using a clear film to relevant surfaces and cannot be seen or felt. It is non toxic and does not have any allergenic properties.

Where should I use Microbe Shield Treatment?

It can be applied to any office surface and is most suitable where there are multiple users at one application, such as phones, desks, doors and door handles, railings etc. Some of these applications are:

- Carpets
- Walls
- Furnishings
- Framing timber
- Shower stalls and bathroom components
- Pool decks
- HVAC system components (insulation, coils, fans, walls, frames, etc)
- Toilets and urinals
- Gymnasiums and health clubs
- Food surface areas
- Customer contact areas
- Key touch points – such as call centre phones etc

Short Term Event Hire

TPR GROUP: Your 'must have' event partner

Key Benefits

- Over 30 years experience
- Specialists in short term event hire
- Wide array of stunning and unusual products
- Professional, resourceful, reliable and innovative
- 24 Hour Delivery

TPR GROUP has an extensive range of casual hire products and services that help make your event a great success. From Indoor Plant Hire, Coffee Machine Hire, Office Artwork Hire (Sculptures, Artvases, Aquariums, Water Features and Eco-friendly Heaters) to Plant Pot Advertising - we are committed to creating special events.

Experienced, professional and innovative we ensure we deliver what you need, when and where and on time! We handle small to large events, including: Corporate Functions; Award Ceremonies; Conferences; Wedding Ceremonies and Receptions; Religious Events; Fashion Shows; Parties; Themed Events; Trade Shows; Open Homes; Product Launches; Corporate Functions; Concerts; A-List Celebrity Events; Official Openings; Movie Premieres; Film Shoots and more – our experience is vast!

A few suggestions to make your event a great success!

- Go green with abundant tropical plants
- Create rainforest jungle themes
- Screen off areas with living plant partitions
- Match your pots to your corporate colours
- Choose Mini Gardens for healthy, memorable corporate gifts
- Add tranquillity and environmental soundscape with Water Features
- Enhance focal points with exclusive 'Artvases' (unique 'Living Sculptures')
- Create a dramatic entrance with Eco-friendly Heaters
- Create the 'wow factor' with wall hung Aquariums
- Add style and sophistication with stunning contemporary Sculptures
- Display key messages in our exclusive Advertising Plant Pots – perfect for product launches
- Personalise hire products with your corporate logo

If you are planning a special event don't hesitate to contact us – we'd love to assist you!

(Not all products and services are available in all locations)



Product Promotions



Product Launches



Wedding Events



Corporate Functions



Get your advertising message
on plant pots noticed 24/7

Key Benefits

- Flexibility - specific geographic regional campaigns (national or local)
- Affordable way to advertise
- Impact signage
- Ideal for advertising special deals or your logo
- Signs easily changed over
- Great space saver
- Can be used to direct traffic flow

Get your message across. Watch your sales go up.
Add to your campaign strategy now! Let plant advertising
carry your organisation's message for you everywhere.

About Pot Plant Advertising

For most people, a healthy looking plant is something
to admire and appreciate, but at TPR, the largest
national distributor of indoor plant hire, we say they
are an unexploited marketing medium, with those
great pots as mini billboards.

100% of people read the message on the plant pot
as they pass it. 70% of those read aloud to the people
they're eating with or passing with. That's a great
opportunity for any astute marketing person - if you
have the right message there, people are naturally
going to talk about it and take action.

Message Impact

Plant pot advertising is all about harnessing a new
and different force in marketing. It's a great way
of creating a word-of-mouth campaign and making
use of your existing real estate to maximum
marketing advantage.

**Our exclusive new container
is especially designed to allow
for "slip-in" signage on all four sides.**

**Promote your company values,
products and services. Perfect
for foyers, customer areas
and busy waiting rooms.**





motivation clarity productivity energy wellbeing performance success



National Service Centre 6 Pedvin Place Annangrove NSW Australia 2156 T: 1800 631 365 F: 1800 631 265 E: sales@tpr.com.au www.tpr.com.au